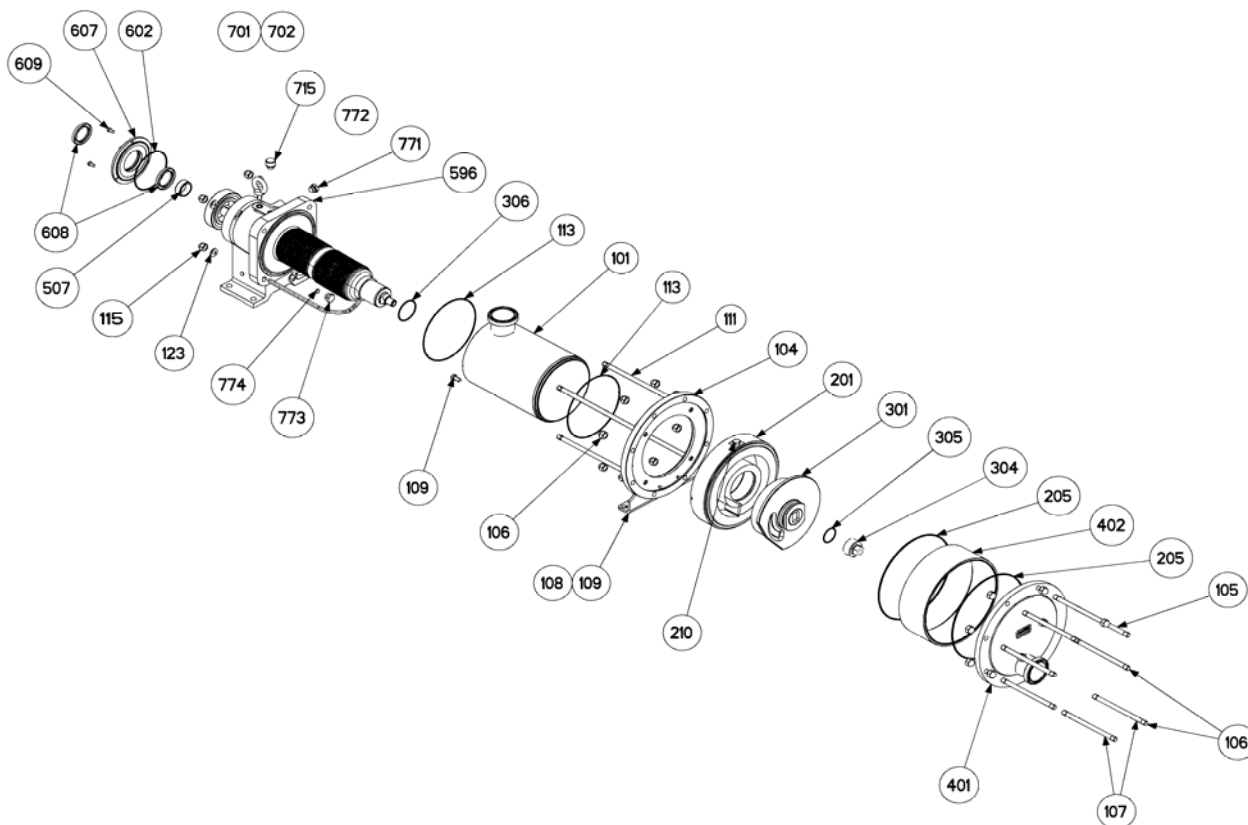


(See Instructions 1001-C00 for Installation, Operation and Maintenance)

Section	1001
Effective	April 2009
Replaces	May 2007



Reference			Description	Quantity		ARTICLE CODE		Wear parts
Ass.	Part	Available		Order	In Pump	C24 i	C36 i	
100		◆	Inlet Manifold PN16 DN80	1		312182.00		
100		◆	Inlet Manifold PN20 DN80	1		312230.00		
100		◆	Inlet Manifold SMS 76	1		312228.00		
100		◆	Inlet Manifold DIN 80	1		312236.00		
100		◆	Inlet Manifold CHERRY BUREL 76	1		312232.00		
100		◆	Inlet Manifold CLAMP ISO 76	1		312234.00		
100		◆	Inlet Manifold ASEPTIK DIN 11864-BF-A DN80	1		313715.00		
100		◆	Inlet Manifold CS F DN80	1		313910.00		
100		◆	Inlet Manifold BS4825-5 DN80	1		313995.00		
100		◆	Jacketed Inlet Manifold PN16 DN80	1		312906.05		
100		◆	Jacketed Inlet Manifold PN20 DN80	1		312908.05		
100		◆	Jacketed Inlet Manifold SMS 76	1		312907.05		
100		◆	Jacketed Inlet Manifold DIN 80	1		312910.05		
100		◆	Jacketed Inlet Manifold CHERRY BUREL 76	1		312909.05		
100		◆	Jacketed Inlet Manifold CLAMP ISO 76	1		312911.05		
100		◆	Jacketed Inlet Manifold CS F DN80	1		313912.00		
100		◆	Jacketed Inlet Manifold BS4825-5 DN80	1		313997.00		
100		◆	Jacketed Inlet Manifold ASEPTIK DIN 11864-BF-A DN80	1		313716.00		
	101		Main body		(1)			
	104		Main body flange		(1)			
	108		Support foot		(1)			
	109		Screw		(2)			
	117		Pin		(1)			
	118		Pin		(1)			
	124		Plug (with Jacketed Inlet)		(2)			
119		◆	Set of studs and nuts	1		312184.00 312260.00		
	105		Stud		(6)			
	106		Blind nut		(16)			
	107		Stud		(2)			
	111		Stud		(4)			
	115		Blind nut		(4)			
	123		Washer		(4)			

(◆) Sets of parts or (▲) parts available to order

Reference			Description	Quantity		ARTICLE CODE		Wear parts
Ass.	Part	Available		Order	In Pump	C24 i	C36 i	
200		◆	Set cylinder/Piston	1		313401.00	313403.00	•
	201		Cylinder		(1)			
	210		Screw		(1)			
	301		Piston		(1)			
	304	▲	Piston nut	1		219426	219455	
206		◆	Set of FKM 'O' ring seals	1		312246.00		•
206		◆	Set of CVT 'O' ring seals	1		312190.00		•
206		◆	Set of FKM lip seals ('L' rings) FDA	1		312501.01		•
206		◆	Set of L PTFE 'O' ring seals	1		312779.05		•
	113		Seal		(2)			
	205		Seal Ring		(2)			
	305		Seal		(1)			
	306		Seal		(1)			
400		◆	Front Cover Plate PN16 DN80	1		312191.00		
400		◆	Front Cover Plate PN20 DN80	1		312255.00		
400		◆	Front Cover Plate SMS 76	1		312247.00		
400		◆	Front Cover Plate DIN 80	1		312253.00		
400		◆	Front Cover Plate CHERRY BURREL 76	1		312249.00		
400		◆	Front Cover Plate CLAMP ISO 76	1		312251.00		
400		◆	Front Cover Plate ASEPTIK DIN 11864-BF-A DN80	1		313717.00		
400		◆	Front Cover Plate CS F DN80	1		313914.00		
400		◆	Front Cover Plate BS4825-5 DN80	1		313999.00		
400		◆	Jacketed Front Cover Plate PN16 DN80	1		312918.05		
400		◆	Jacketed Front Cover Plate PN20 DN80	1		312923.05		
400		◆	Jacketed Front Cover Plate SMS 76	1		312919.05		
400		◆	Jacketed Front Cover Plate DIN 80	1		312922.05		
400		◆	Jacketed Front Cover Plate CHERRY BURREL 76	1		312920.05		
400		◆	Jacketed Front Cover Plate CLAMP ISO 76	1		312921.05		
400		◆	Jacketed Front Cover Plate ASEPTIK DIN 11864-BF-A DN80	1		313718.00		
400		◆	Jacketed Front Cover Plate CS F DN80	1		313936.00		
400		◆	Jacketed Front Cover Plate BS4825-5 DN80	1		314001.00		
	401		Front cover		(1)			
	402		Outlet tube		(1)			
	407		Plug (with Jacketed Front Cover)		(1)			
596		◆	Complete transmission	1		314202.00		
596		◆	Complete transmission + Pressure switch bellows monitoring system	1		313466.00		
596		◆	Complete transmission + ATEX pressure switch bellows monitoring system	1		313827.00		
596		◆	Complete transmission + Pressure gauge bellows monitoring system	1		314794.00		
	9	◆	Bearing gaskets / screws	1		312372.03		
	507		Ring		(1)			
	602		Gasket		(1)			
	608		Lip seal		(2)			
	609		Bearing screws		(3)			
	8	◆	Plugs + gasket	1		312196.00		
	701		Lifting eye bolts		(1)			
	702		Copper-plated gasket		(1)			
	715		Breather		(1)			
	773		Drain plug		(1)			
	774		Copper-plated gasket		(1)			

CVT - FEP encapsulated FKM ; FDA : Food and Drug Administration (21 CFR 177 2600)

(◆) Sets of parts or (▲) parts available to order

Keep this parts lists with Installation, Operation and Maintenance Instructions

To order the required spare parts, indicate the appropriate CUM numbers.



Z.I. la Plaine des Isles - 2 rue des Caillottes F-89000 AUXERRE - France
 Tel : +33 (0)3 86 49 86 30 • Fax : +33 (0)3 86 49 87 17
 contact@mouvex.com • www.mouvex.com